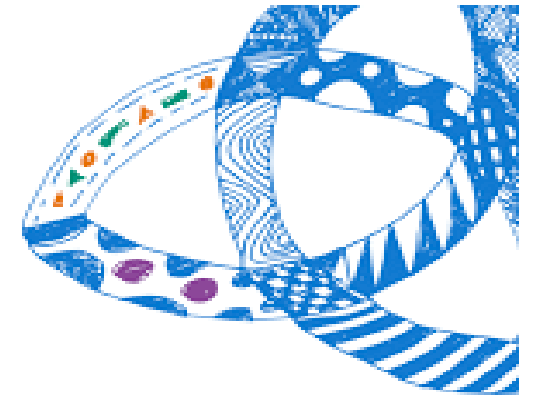


North
Somerset's Family
Hubs

Dawn Newton – Head
of Front Door and
Family Wellbeing
Tracey Wells – Family
Wellbeing Locality
Team Manager



**North
Somerset**
Council



**NATIONAL
CENTRE FOR
FAMILY HUBS**



Anna Freud
National Centre for
Children and Families



Family Wellbeing Team 0-19

Family Support

UK Resettlement

Supporting Families

Advanced Parenting

Local Authority Nurseries

Family Hubs and Children Centres

Missing Duty

SEND



The importance of early intervention

- The 1,001 days are a time of unique opportunity and challenge – our experiences during this time lay the foundations for long-life emotional and physical health.
- We are developing 3 of our children centres to become family hubs, 0-19 years. We are using the hub and spoke model as a place - based way of joining up locally in the planning and delivery of family services . They bring services together to improve access, improve connections between families, professionals, and providers and put relationships at the heart of family support .
- Family Hubs offer support to families from conception-19 years and up to 25 for young people with SEND.



Why Family Hubs

An overview

- A family hub is a system-wide model of providing high-quality, whole-family, joined up, family support services. Family hubs deliver these family support services from pregnancy, through the child's early years and later childhood, and into early adulthood until they reach the age of 19 (or up to 25 for young people with special educational needs and disabilities).
- Family hubs aim to make a positive difference to parents, carers and their children, through providing a mix of physical and virtual spaces, as well as home visits for families to easily access non-judgemental support for the challenges they may be facing. Family hubs will provide a universal front door to families, offering a one-stop shop of family support services across their social care, education, mental health and physical health needs.

Key Council Strategies this programme will feed into and assist with outcomes are:

Health & Wellbeing Strategy

Early Years Strategy

Education Strategy

Mental Health Strategy

What support is available?

The National Centre for Family Hubs website is www.nationalcentreforfamilyhubs.org.uk/

We are working closely with the National Centre for Family Hubs (NCFH). This is a new national initiative, led by Anna Freud and funded by the Department for Education, to help ensure all babies, children and families have the support they need through a network of Family Hubs across England. In collaboration with the Early Intervention Foundation, the work of the NCFH is practice led, evidenced – based, and most importantly is informed by families’ lived experience. We will have a Family Hub in each locality, with children centres supporting as spokes, i.e. a hub and spoke model.

Family Hub and Local Authority Guide provides a framework to support the development of Family Hubs

[Family Hubs and Start for Life Programme Guide \(publishing.service.gov.uk\)](http://publishing.service.gov.uk)

We are working in partnership with our ICB colleagues to ensure an equitable offer.

We are working with neighboring authorities to provide peer support and share good practice.

Introduction to North Somerset's Family Hubs

Our three Family Hubs

- The Carlton Centre - South
- Castle Batch Family Hub – East
- Clevedon Family Hub - North



Family Hub- 3 main principles

Each family hub is unique and bespoke to the local community it serves, but there are three key delivery principles that run through all family hubs, which are:

Access

Family hubs are a clear, simple point of access for help and support.

Connection

Key services will work together for the benefit of families offering a universal “front door,” there will be shared outcomes and effective governance. Professionals working together, through co-location data sharing and a common approach to their work. Families only having to tell their story once, the service is more efficient, the families will receive more effective timely support.

Statutory services, the community, charities and faith sector partners working together to get families the help they require.

Relationships

The family hub prioritises strengthening relationships and builds on family strengths. This being the heart of everything that is delivered in the system wide family hub model.



Building on Co-production – “Nothing about us, without us.”

Ultimately, co-production is about redistributing power to families and enabling them to make informed choices about their own lives.

The family hub model, like children’s centres, is an integrated service. The model is expected to involve families and communities to build social capital and cohesion.

Nationally there has been a limited involvement of parents and carers in the planning and delivery of children’s centres and hubs;

There has been little service co-design work with parents and carers; and

There has been a decrease in the use of advisory boards or parent forums.

Co-production can help address these limitations.



The core family hubs services

Post 16 education support	Support for separating and separated parents	Debt and welfare advice	Mental health services	Substance (alcohol/drug) misuse support	Oral health improvement	Local authority 0-19 public health services, based on local needs assessments
Intensive targeted family support	Housing	Youth services – universal and targeted	SEND support and services (inclusive of the CC, SENDCAS, Portage, MAISEY)	Support for Elected Home Educators	Activities for children aged 0-5	Early language and the Home Learning Environment
Parenting programmes 0-19	Domestic abuse Support	Midwifery / maternity	Health visiting	Infant feeding support	Perinatal mental health & parent-infant relationships	Stop smoking support
	Nutrition and weight management	Youth justice services	UK Resettlement support	Family Group Conferencing		

A one stop shop

A group of people's hands are shown holding a large, light-colored wooden heart. The heart has the text "BUILDING A NETWORK OF SUPPORT" engraved on it in a bold, sans-serif font. The background is a blurred indoor setting with other people.

Our vision - North Somerset Family Hubs will be:

- Vibrant, inclusive, providing services after school, during the evenings and weekends.
- A place to build friendships / networks and increase the sense of community. Services run by the community for their community.
- Where children, young people and adults will gain learning
- A fun place where memories can be made
- A safe place for CYP, away from drugs, alcohol and those who might try to exploit them.
- A one stop shop for all.



Our vision will also include the following at The Carlton Centre:

- Advanced Parenting dedicated room which will support training and parenting groups.
- Midwifery dedicated room
- SEND specialism for clubs, activities, support for under 5's
- An inclusive, Community cafe provided in co-production with vulnerable adults, e.g. Experienced Care Leavers, UK Resettlement families. A place where we can be inclusive, not only work together but learn and celebrate each other.
- Youth provision

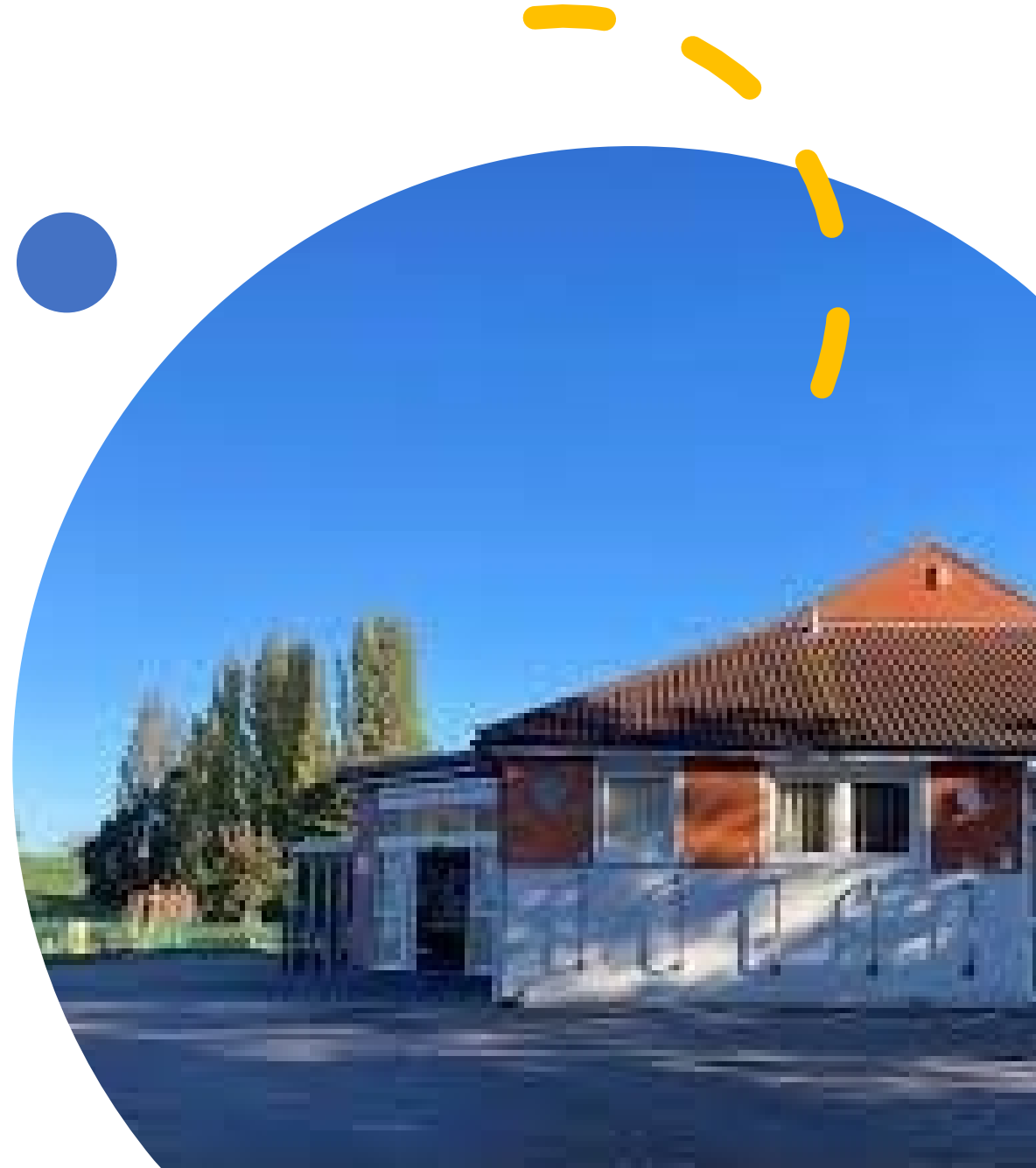


The vision will also include the following at the Castle Batch Family Hub

An inclusive, community cafe provided in co-production with vulnerable adults, e.g. Experienced Care Leavers, UK Resettlement families. A place where we can be inclusive, not only work together but learn and celebrate each other.

An inclusive, community play park

Youth provision



Clevedon Family Hub

An already established building with the following services:

- CAMHS
- Youth provision
- Health Visiting
- Family Support and Safeguarding

We continue to build on this offer.





“Start with what is necessary, then what is possible and suddenly you are doing the impossible.”